

ON ROAD



A good steering tyre needs to provide long service life, even wear and good manoeuvrability in all applications. The FS400 delivers this, as well as giving a comfortable, quiet ride.

- Excellent wet and dry handling.
- Resistant to irregular shoulder wear with Decoupling Groove technology.
- Long casing life with Stone Ejectors, which prevent stones getting trapped in the grooves.
- Low noise level due to Sound Barrier technology.
- Extra economy, with casing which is ideal for regrooving and retreading.

STEER

FS400

Problem-free tyre built for regional and long haul operations

Size	Load/Speed Index
8.5R17.5	121M
9.5R17.5	129M
12R22.5	152/148L
205/75R17.5	124/122M
215/75R17.5	126/124M
225/75R17.5	129/127M
235/75R17.5	132/130M
245/70R19.5	136M
265/70R19.5	140/138M
275/70R22.5	148/145M
285/70R19.5	145/143M
295/80R22.5	152/148M
315/70R22.5	152/148M (154/150L)
315/80R22.5	154/150M (156/150L)



For short or long haul, well-suited to public service vehicles.

- Deep tread gives good wet performance and high mileage.
- Copes with high-torque loading; handles well in wet and dry.
- Regular wear pattern due to optimized pressure across footprint.
- Highly suitable for retreading.

DRIVE

PSD3000

Superior Traction

Size	Load/Speed Index
11R22.5	148/145L
12R22.5	152/148L
315/80R22.5	154/150M



The premium tyre for drive axles, providing superior traction and wear life for long distance and regional hauliers.

- Excellent handling in wet and dry.
- Outstanding wet performance with high number of blocks and "straight through" grooves.
- Tread pattern designed for long wear life.
- Optimal casing provides smooth ride comfort and performance and makes the tyre ideal for retreading.

DRIVE

FD600

Provides good life and traction

Size	Load/Speed Index
8.5R17.5	121M
9.5R17.5	129M
12R22.5	152/148L
205/75R17.5	124/122M
215/75R17.5	126/124M
225/75R17.5	129/127M
235/75R17.5	132/130M
245/70R19.5	136M
265/70R19.5	140/138M
275/70R22.5	148/145M
285/70R19.5	145/143M
295/80R22.5	152/148M
315/70R22.5	152/148M (154/150L)
315/80R22.5	154/150M



Designed to resist irregular wear and increase fuel efficiency, for trailer operations.

- Optimal tread depth provides low cost per kilometre and good resistance to irregular wear.
- Low tyre weight helps with fuel consumption.
- Range of sizes to fit most trailers, including low platforms.
- Tyre construction is ideal for regrooving and retreading.
- Tyre marked FRT (Free Rolling Resistance)*.

TRAILER

TSP3000

Good even wear

Size	Load/Speed Index
9.5R17.5	143/141J
215/75R17.5	135/133J
235/75R17.5	143/141J
245/70R17.5	143/141J
265/70R19.5	143/141J
285/70R19.5	150/148J
315/80R22.5	154/150M
385/65R22.5*	160J (158L)
425/65R22.5	165K

ON/OFF ROAD



Designed for flexible usage – front axle or all-position – the UT3000 Plus delivers high performance and cost efficiency in ON/OFF road situations such as construction, road building and other infrastructure applications. An aggressive tread pattern design provides good traction, while the casing is ideal for retreading.

- New cap compound that provides tough resistance to chipping and cutting while also reducing wear rates on asphalt compared to previous generation.
- Excellent durability due to rugged construction and tread compound which is especially resistant to cuts.
- Good tear resistance, heat durability and long service life.
- Superior traction from aggressive tread pattern design.

ALL-POSITION

UT3000 Plus

Durable and good cut resistance

ENHANCED

Size	Load/Speed Index
9.00R20*	140/137K TT
10.00R20*	146/143K TT
11R22.5	148/145K
12.00R20*	154/150K
12R22.5	152/148K
13R22.5	154/150K
295/80R22.5	152/148K
315/80R22.5	154/150K (156/150J)

* 20 inch sizes ON/OFF still available in non Plus specification



The wide and deep tread design of this drive axle all-steel radial tyre provides superior traction for ON/OFF road vehicle use. It is ideal when used with the UT3000 Plus in the front axle position.

- New cap compound that provides excellent resistance to chipping and cutting while also reducing wear rates on asphalt compared to previous generation.
- Excellent tear resistance, heat durability and longer service life.
- Excellent compound enhances OFF road durability and resistance to damage.
- Deep and wide design gives heavy tread volume for excellent traction.

DRIVE

SAT3000 Plus

Superior traction for ON/OFF vehicle use

ENHANCED

Size	Load/Speed Index
12.00R20*	154/150K TT
13R22.5	154/150K
315/80R22.5	154/150K

* 20 inch sizes ON/OFF still available in non Plus specification



Extremely wear resistant and very durable, the TMP3000 is a real winner... ON and OFF the road.

- An improved shoulder pattern design resists severe shoulder stress which is typical of trailer usage.
- Belt construction with strong belt cords ensures maximum durability in all service conditions.
- Aggressive pattern gives excellent performance in regional ON/OFF road usage.
- High wear performance, including cap compound with high resistance to OFF road tears and cuts.

TRAILER

TMP3000

Excellent wear resistance with good ON/OFF capabilities

Size	Load/Speed Index
265/70R19.5	143J
275/70R22.5	148/145K
385/65R22.5	160J (158L)
445/65R22.5	169K

*In the case of trucks, an FRT (Free Rolling Tyre) is a tyre which may only be fitted on trailer or tag axes and not on drive or front steer axes.

Bridgestone recommends that truck tyres marked "FRT" (Free Rolling Tyre) only be fitted on trailer or tag axes and not on drive or front steer axes.

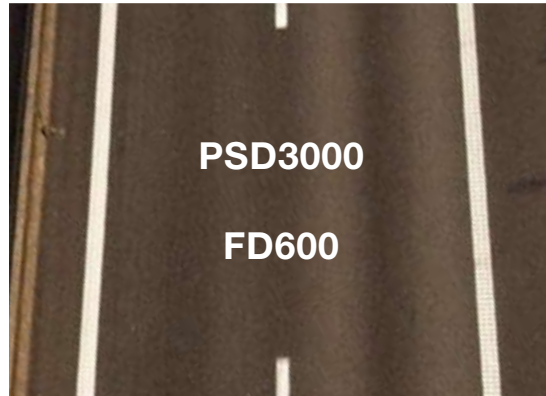
Neither Bridgestone nor any of its affiliated entities may be held liable for any damage, loss or any other claim relating to an FRT-marked tyre which has been fitted in the drive or front steer position against Bridgestone's recommendation, unless such damage, loss or claim arises due to a fault of Bridgestone or its affiliated companies.

APPLICATION CHART

STEER



DRIVE



TRAILER



ON ROAD

ON/OFF ROAD

www.firestone.eu

Firestone
together

Bridgestone Europe NV/SA

Kleine Kloosterstraat 10
1932 Zaventem, Belgium
Tel.: (+32) 2 714 67 00
Fax.: (+32) 2 714 67 09

COST EFFECTIVE TRANSPORT SOLUTIONS Truck Tyres

Firestone
together

WORKING TOGETHER



*The information contained in this publication is for guidance purposes only. Whilst every effort has been taken in its production, no responsibility can be accepted for any loss or damage arising from any undetected error. Any data supplied is subject to possible revision following the date of publication. *Creation and realization: Undas • Printed by: Undas • FS TBR BEU - 09/08 - 996-006

www.firestone.eu